

BB options

contemporary laminate worksurfaces

welcome to Bushboard

We have been developing kitchen and bathroom surfaces in the UK since 1935 and the idea that everyone deserves great design whatever their budget underpins our entire approach to surfacing.

When you buy a Bushboard product you are buying into our ethos of exceptional quality, exquisite design, excellent value and of course, first class customer care. We are proud that our surfaces are made in the UK.

We want to ensure you get the very best from your new worksurfaces so our products carry a lifetime guarantee as well as a unique installation warranty so you can be sure your Options worksurface will look sensational for years to come.

follow us on our social media channels...



welcome to Options

Stylish, hardwearing and affordable: that's the Options range in a nutshell.

The Options collection is a fresh spectrum of natural looking woods, luxurious marbles and stunning stones with realistic textures designed to help you make your dream kitchen a reality. Options laminate surfaces are easy to choose, easy to fit and easy to style.

This design-led range is created with choice, versatility and realism in mind. Each laminate is specially coated with anti-bacterial protection, which guards against the formation of bacteria by slowing down cell multiplication.

Here in the brochure, you'll find the entire Options range of worksurfaces, splashbacks and upstands.

Don't forget to follow us online and share your creations using @bushboard.



high quality & durable surfaces



hygienic & antibacterial surface protection



28mm thickness also available



smart Q3 edge profiles



great choice of 50 designs



3m & 4.1m lengths



lifetime product guarantee



3 year joint guarantee

when installed with Complete Adhesive



inspiring design

See your kitchen come to life with our online Design Studio tool.

The choice of a kitchen worksurface is design led. We have focused on showcasing a selection of our designs to inspire you and show how our worksurfaces, splashbacks and upstands can work together to create an amazing kitchen space.

You could even order some samples and try pulling your look together in a mood board! Find more inspiration on our social media channels.

Many of our retail partners nationwide have our products on display; a great way to help you decide.

To get visualising and find a showroom near you, visit our website at www.bushboard.co.uk.

Pictured right: Walnut Appalaches worksurface in ultramatt texture.



log on to www.bushboard.co.uk/design-studio and start designing!





luxurious
marble

timeless elegance

Timeless elegance meets contemporary chic in the Options marble range. You are guaranteed to make an opulent statement in any kitchen.

Choose from white, grey and taupe marbles with natural veining, complex depth of colour and an ultramatt texture for a luxurious, clean-lined aesthetic.

For wide open spaces, larger veining looks impressive on worksurfaces and wrapped around breakfast bars, smaller veining works for more compact kitchens.

Rich, dark colour palettes of navy, charcoal and emerald green create atmosphere in a space of any size, allowing you to create a distinctly top-end look.

They truly are affordable luxury.

Pictured left: Turin Marble worksurface and splashback in ultramatt texture.



Turin Marble ultramatt



Solace Marble ultramatt



Sirocco Marble ultramatt

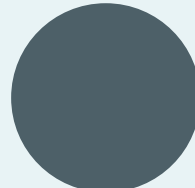


BB get the look

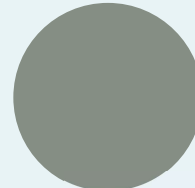


Pictured left:

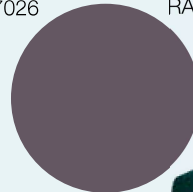
1. Breakfast bar, worksurface and splashback: Sirocco Marble, ultramatt texture, 38mm with Q3 profile.



RAL 7026



RAL 7033



RAL 8019

Inspired?

Why not take these codes to a paint supplier to get the look.



Tribeca Bar Stool with backrest, Velvet upholstered, Teal £129

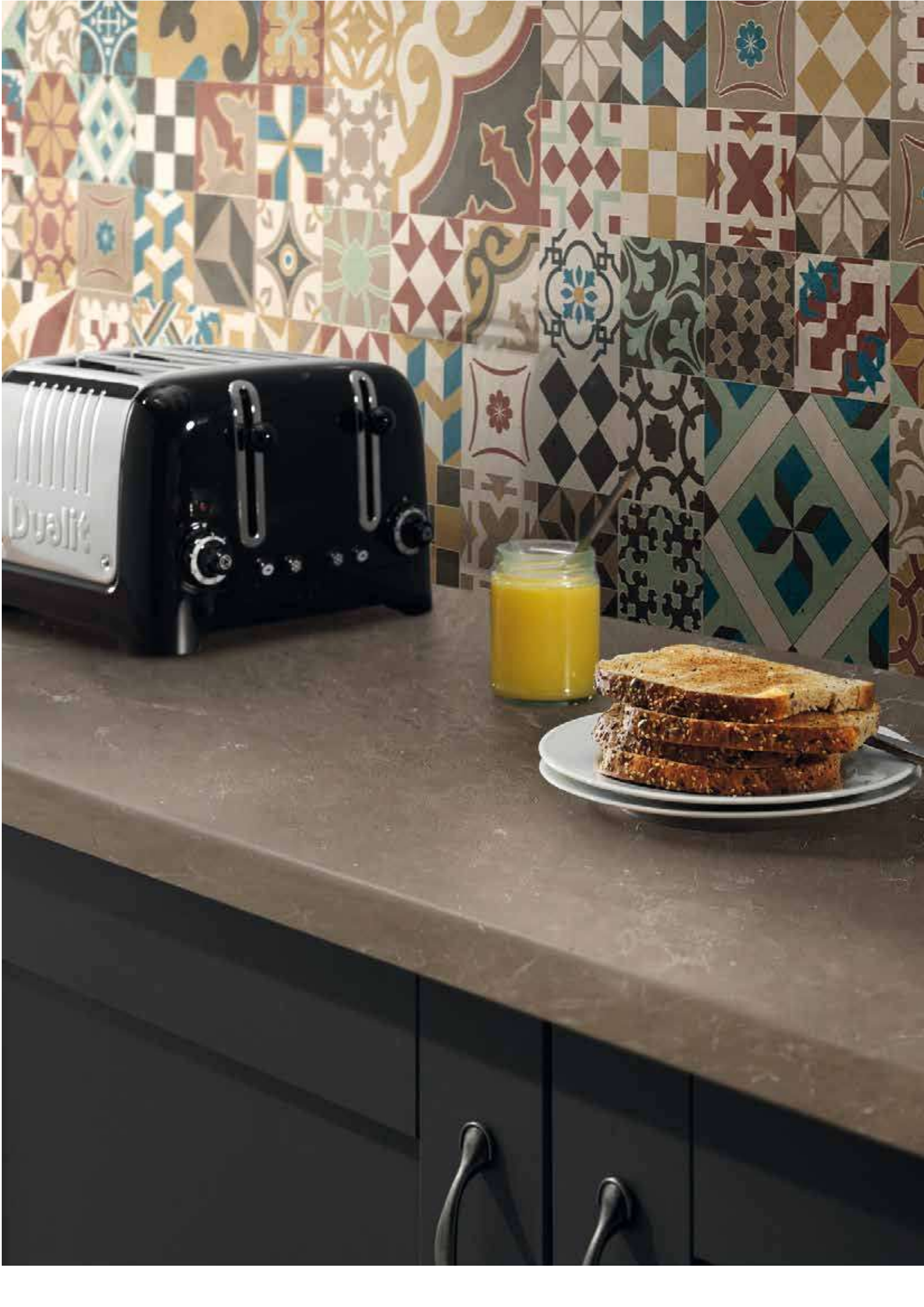
naturally beautiful

Contemporary and organic, the designs in the collection combine beautifully with traditional hand painted or sleek slab doors in dramatic colours. Run the design through worksurface and splashback to outstanding effect or create a contrast by teaming with a statement splashback.

These designs are so full of character and charm it makes them timeless. And the really clever part, our ultramatt texture replicates the matt polished surface of authentic marble.

So make a statement and bring some nature into your new kitchen with these impeccable designs.

Pictured right: Solace Marble worksurface in ultramatt texture with Vista Casablanca multi splashback.





industrial
details

urban appeal

Get the urban look with an industrial-inspired surface; weathered concrete and oxidised metal effects create reclaimed style.

With Roche finishes that replicate the rugged texture of a real stone worksurface, Woodstone Blanc, Woodstone Gris and Tectonica look and feel perfectly timeworn with a nod to natural rawness while Underground Stucco, with its Ultramatt texture, is softer than its corroded appearance suggests.

Designed to be distinctive, our Industrial Detail decors pair easily with the mix and match approach of classic industrial: wooden doors, concrete floors, exposed brickwork, burnished metallics and reclaimed accessories complete the look.

Pictured left: Underground Stucco worksurface in ultramatt texture with Vista London Brick splashback.



Woodstone Blanc roche



Woodstone Gris roche



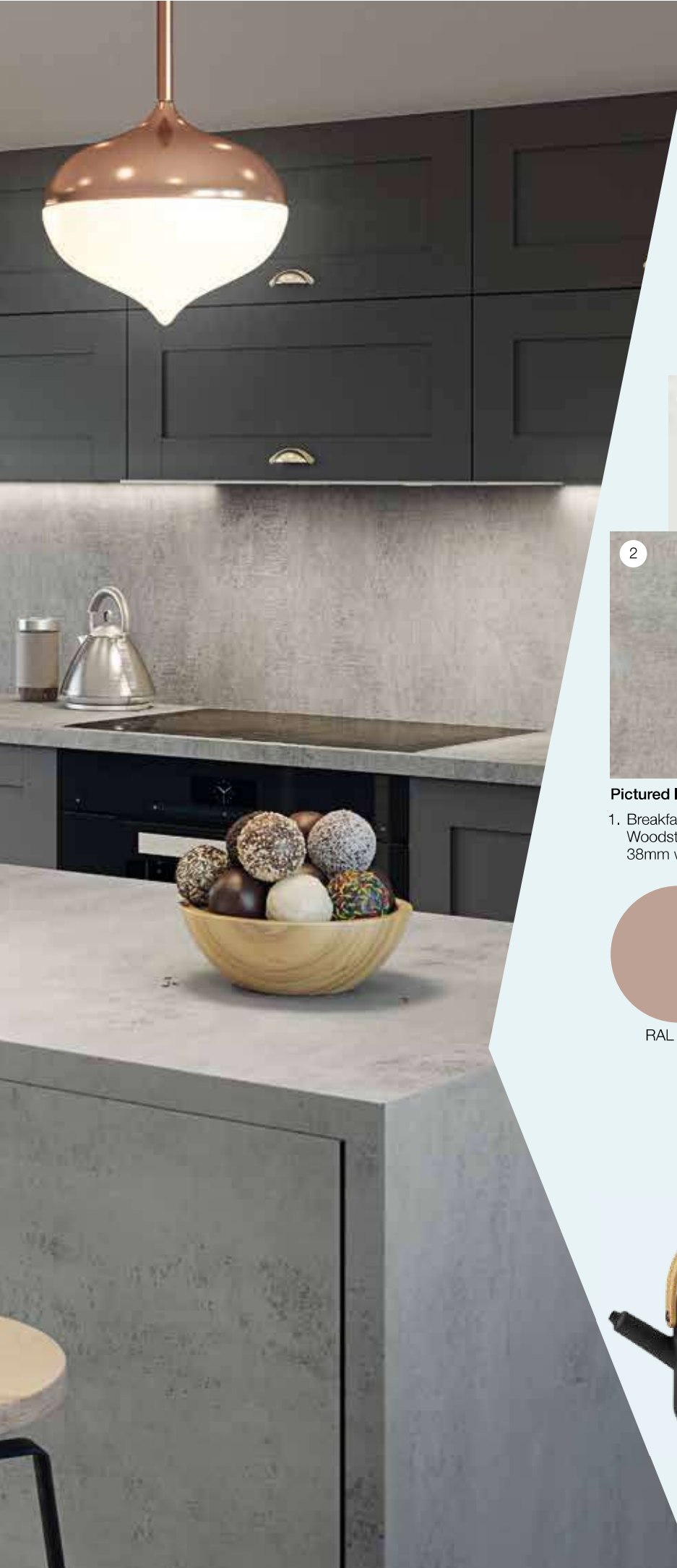
Underground Stucco ultramatt



Tectonica roche

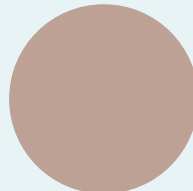


BB get the look

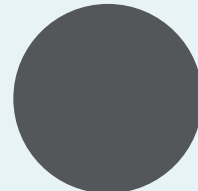


Pictured left:

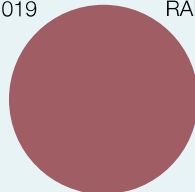
- 1. Breakfast bar: Woodstone White, roche texture. 38mm with Q3 profile.
- 2. Worksurface & splashback: Woodstone Grey, roche texture. 38mm with Q3 profile.



RAL 1019



RAL 7024



RAL 4002

Inspired?

Why not take these codes to a paint supplier to get the look.



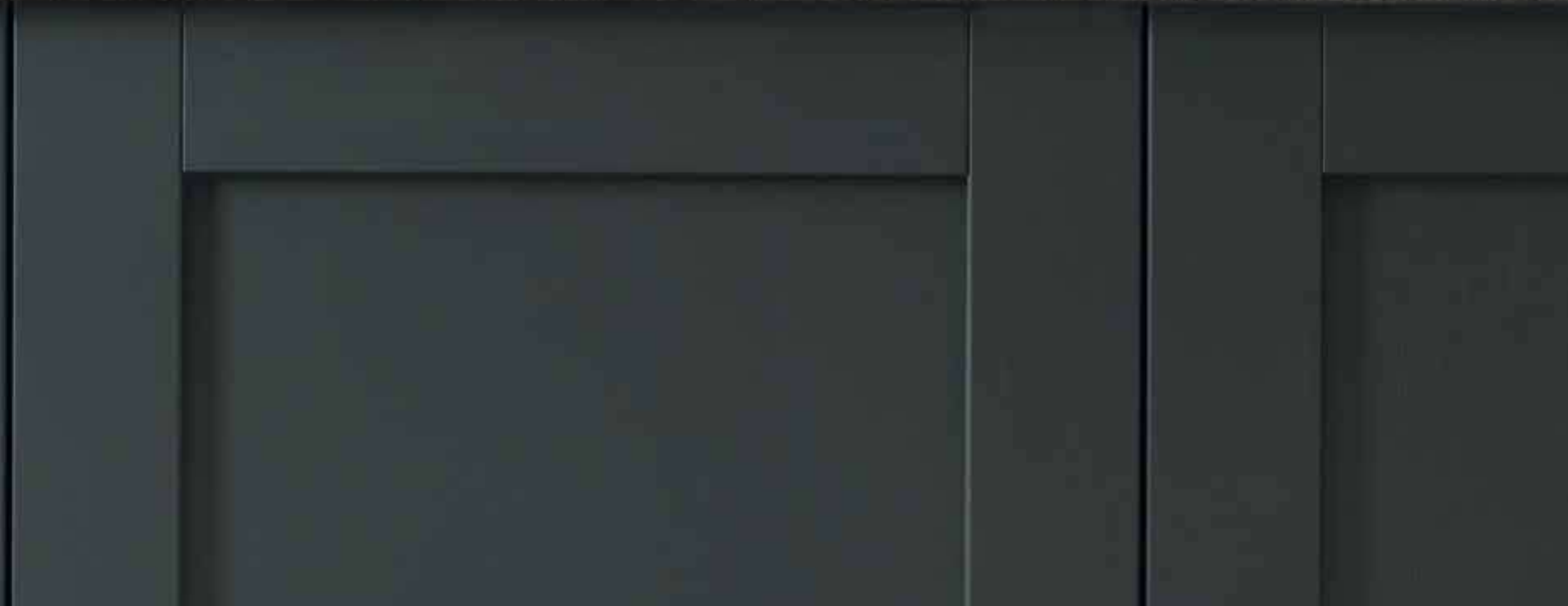
natural elements

Bring the outdoors in with a selection inspired by the beauty of nature.

Our Industrial Detail family showcase how honest patterns combined with principal colours deliver worksurface designs full of character.

This brand new selection of surfaces has been specifically developed to reflect current trends in home design, think naturally derived materials including stone and wood, natural light and greenery.

Pictured right: Tectonica worksurface in roche texture with Vista Golden Grove splashback.





scandi
style

a nod to nordic

The clean and cosy vibes of Scandinavian chic we know and love form the basis of the Scandi style trend, an attitude that embraces warmth, cosiness, family and mindfulness.

Rustic farmhouse meets mid-century modern in the Scandi interior. The perfect space for Options woodgrains.

These notions are realised in light, bright spaces with warm white and washed grey palettes, soft fibres and pale woods.

Dark woods can work in the Scandi kitchen too, by injecting Scandi Noir. Giving Nordic vibes a modern spin by reworking using a dark, moody palette.

Pictured left: Gardenia worksurface in ultramatt texture.



Gardenia Ultramatt



Mondego Oak Ultramatt



Pitch Pine Ultramatt



Brocante Oak Ultramatt



Walnut Appalaches Ultramatt



Black Oak Ultramatt



Nagoshi Pine Fibril



Meymac Oak Ultramatt



Clear Beech Block Ultramatt



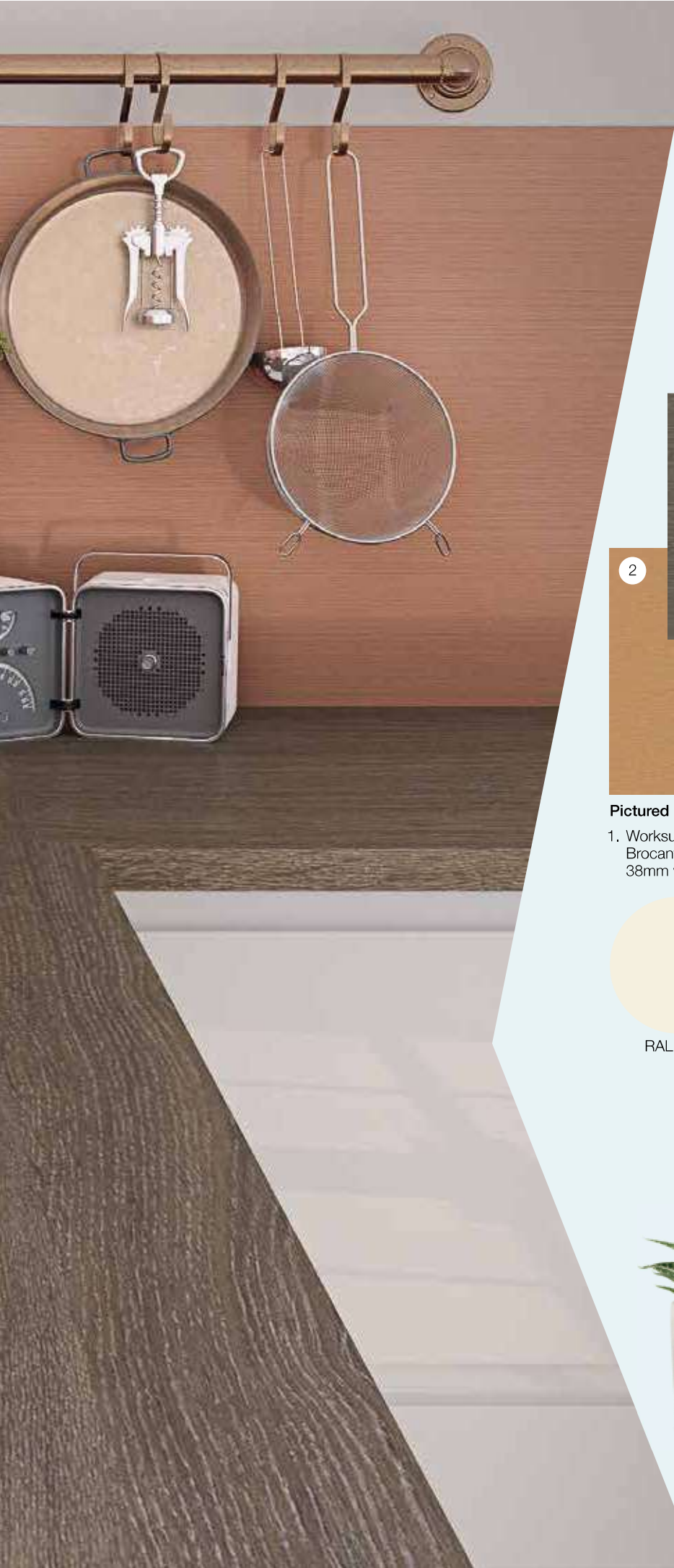
Warm Walnut Block Ultramatt



Stableford Oak Block Ultramatt



BB get the look



Pictured left:

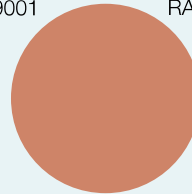
- 1. Worksurface: Brocante Oak, ultramatt texture. 38mm with Q3 profile.
- 2. Splashback: Brushed Copper, real metal.



RAL 9001



RAL 9018



RAL 3012

Inspired?

Why not take these codes to a paint supplier to get the look.



Pitch Pine worksurface in ultramatt texture.





Nagoshi Pine worksurface in fibril texture.

Stableford Oak worksurface and upstand, both in ultramatt texture.





Mondego Oak worksurface and upstand, both in ultramatt texture.



freeflowing
monochrome

lustrous looks

Inject glamour with a Higlöss Strass surface.

Available exclusively in black and white, our two higlöss monochrome Strass worksurface designs include iridescent metallic flecks. These eye-catching surfaces provide a chic, glamorous look, adding luxury to the most hardworking of interior spaces.

If your look demands a more subtle sparkle take a look at Absolute, our jet black decor which has been teamed with fusion texture.

Pictured left: Strass Noir worksurface and upstand, both in higlöss texture.



Strass Blanc higlöss



Absolute fusion



Strass Noir higlöss



natural
elements

echoes of nature

The Natural Elements concept is all about appreciating nature and it's positive influence on our wellness and reflecting that in our homes.

Bringing natural textures into the kitchen helps create a sense of calm, with an interior hideaway that feels far removed from the complexities of modern life.

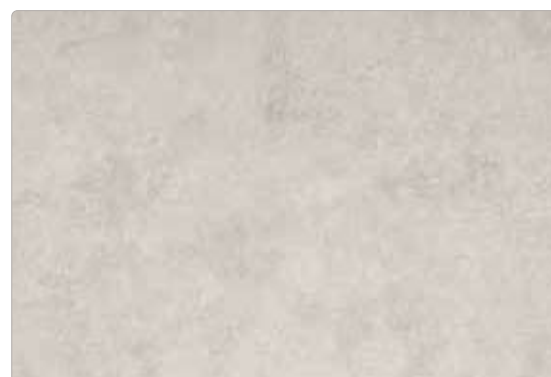
When it comes to stone inspired decors you'll find realistic replicas in the Options collection including roche-finished cements, weathered slabs with natural looking imprints and even a trend-led, candy-coloured terrazzo.

Our focus on thoughtfully reproduced texture gives Options stones an authentic look and feel, without the price tag.

Pictured left: Element worksurface and in roche texture with Vista Kaleidoscope cool blue acrylic splashback.



Cassata ultramatt



Element roche

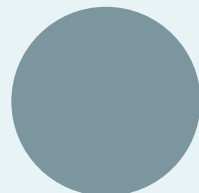


BB get the look



Pictured left:

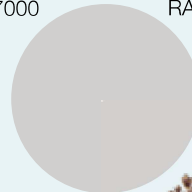
- 1. Worksurface:
Cassata, ultramatt texture.
38mm with Q3 profile.



RAL 7000



RAL 9002



RAL 7047

Inspired?

Why not take these codes to a paint supplier to get the look.



a guide to texture

Marrying the right texture with the right design is a skill in itself and brings a design to life. We've worked with eight textures across our range to do just that.

Our textures are carefully chosen to complement each decor and take it from laminate to lifelike.

This quick guide helps you see our textures in more detail and look at the matrix on page 43 to see which texture your chosen worksurface is available in.

Don't forget to use our speedy sample service to see the final result for yourself. Simply visit our website to order yours today!



Fusion Subtle matt and gloss weathered reflections.



Roche Contemporary matt heavy stone effect



Ultramatt Very matt smooth finish



Surf Slightly textured everyday finish



Fibril Natural matt texture highlighting wood grain



FA Subtly textured everyday finish



Gloss High shine, smooth finish



Higloss High shine with metallic flecks, smooth finish

sizes and profiles

Worksurface profiles:

28mm
postformed
Q3

38mm
postformed
Q3

38mm
postformed
Q10

* Strass Noir & Strass Blanc
only

Worksurface lengths:

3000 x 600mm

4100 x 600mm

Breakfast Bar lengths:

3000 x 900mm

4100 x 665mm

4100 x 900mm

Accessories:

Solid colour
splashback
8mm

Patterned
splashback
9mm

Acrylic
splashback
4mm

Upstand
20mm

stylish splashbacks

Have you thought about a kitchen splashback? They make a great style statement behind a sink or hob area and offer a practical alternative to traditional wall tiles with no messy installation or scrubbing grout clean. They go straight onto the wall in one smooth piece and fix in place with our Complete adhesive.

Affordable, hygienic and still looking fabulous in years to come, we have a stunning range to choose from. Whether you want to continue your look from worksurface to splashback or want a contrast, we've thought about it.

With brushed metals, geometric shapes, vintage inspiration, wood grains, granites and glossy acrylic splashbacks that look like glass, there is an abundance of choice so take a look.

Pictured right: Vista Casablanca grey splashback with Evolve Marmo Bianco worksurface in ultramatt texture. Image shows core-coloured drainer grooves.

Pictured detail: Vista Constellation acrylic splashback.





take your pick

Contrasting splashbacks

For matching splashbacks see our matrix on page 43.



Side 1. Casablanca multi MDF



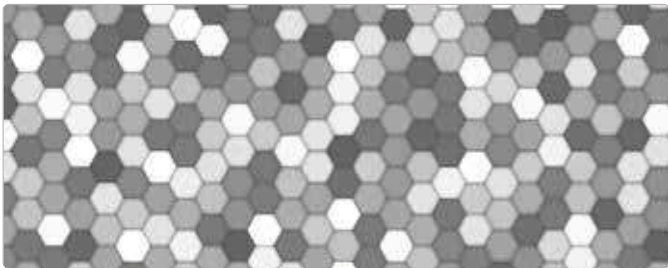
Side 2. Vintage taupe MDF



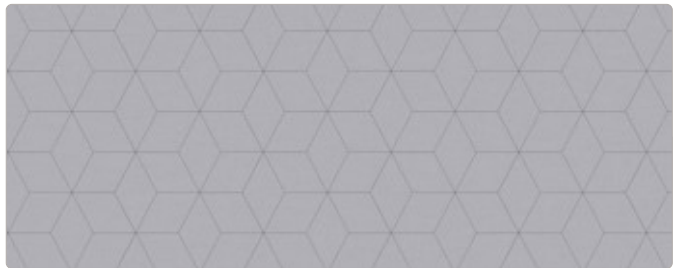
Side 1. Casablanca grey MDF



Side 2. Vintage grey MDF



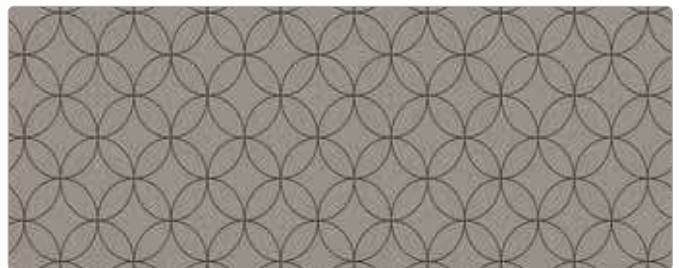
Side 1. Honeycomb MDF



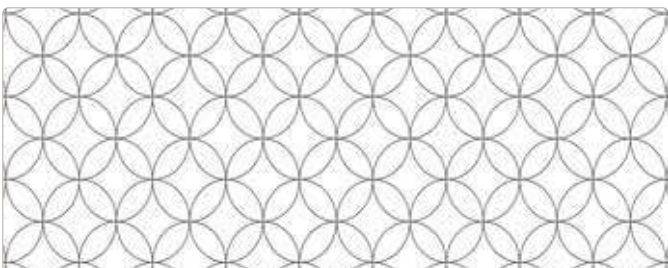
Side 2. Blocked Hex dove MDF



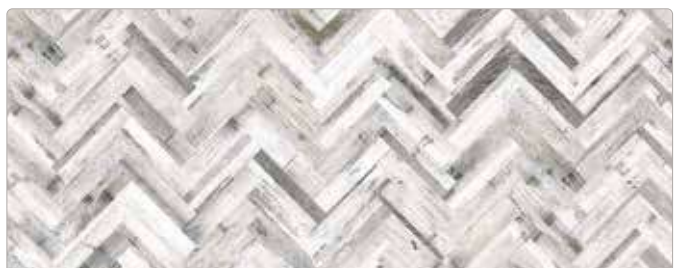
Side 1. Blocked Hex midnight MDF



Side 2. Roulette Curves taupe MDF



Side 1. Roulette Curves white MDF



Side 2. Herringbone whitewash MDF



Side 1, Herringbone natural MDF



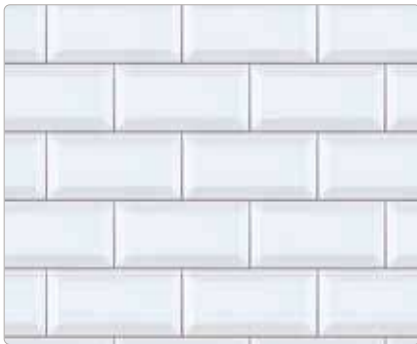
Side 2, London Brick MDF



Side 1, Summer Palm MDF



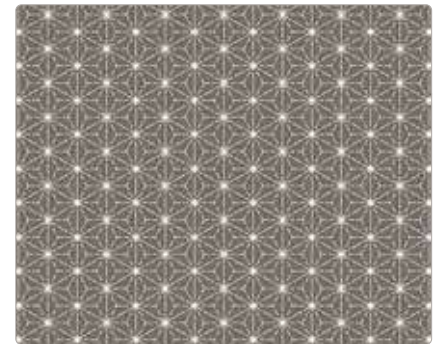
Side 2, Golden Grove MDF



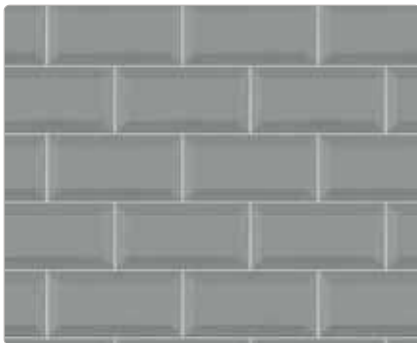
Inner City ice cloud acrylic



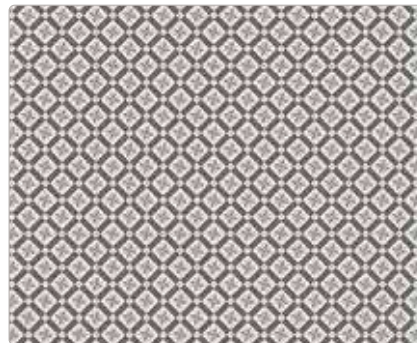
Kaleidoscope cool blue acrylic



Constellation acrylic



Inner City ocean grey acrylic



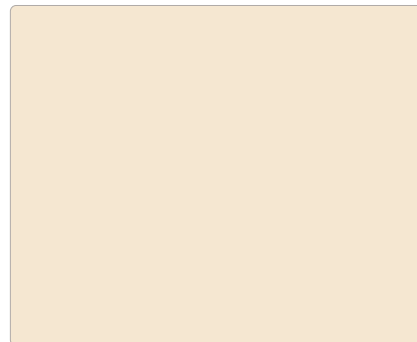
Kaleidoscope charcoal grey acrylic



Hazy Forest acrylic



Brushed Copper Metal



Stone Gloss



Brushed Aluminium Metal

Splashbacks and upstands should be fitted at least 50mm from the back of the appliance. Acrylic splashbacks are not suitable behind a gas hob unless a glass protector is used. Splashbacks are not suitable to be used behind free-standing appliances. Metal splashbacks should be earthed by an electrician.

See our installation instructions for full details.

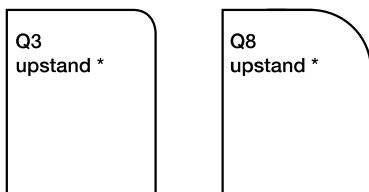
be upstanding

Small details make a big difference.

That's why every worksurface in the Options range comes with a matching upstand. Upstands continue the surface decor up the wall to protect paintwork and create a seamlessly elegant finish.

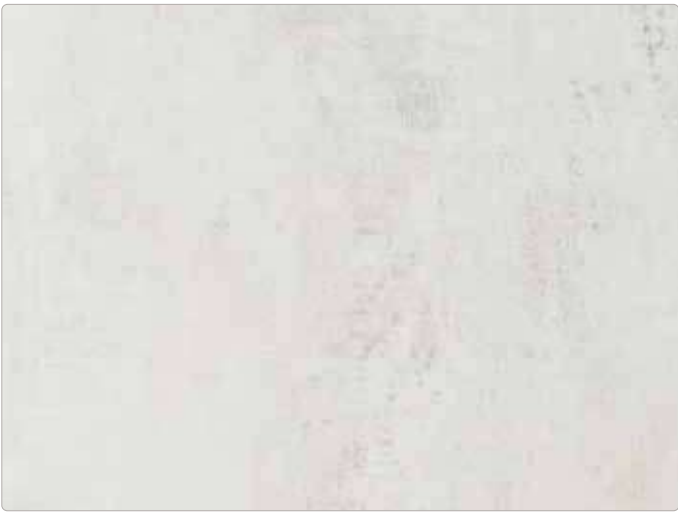
Upstands are finished with the same Q3 or Q8 profile and are sealed in place with Complete coloured adhesive for a perfectly co-ordinated finish.

Pictured right: Pitch Pine worksurface and upstand in Ultramatt texture.



* Please view our matrix on page 43 to see which profile your chosen upstand has.





Woodstone Blanc Roche



Woodstone Gris Roche



Tectonica Roche



Solace Marble Ultramatt



Sirocco Marble Ultramatt



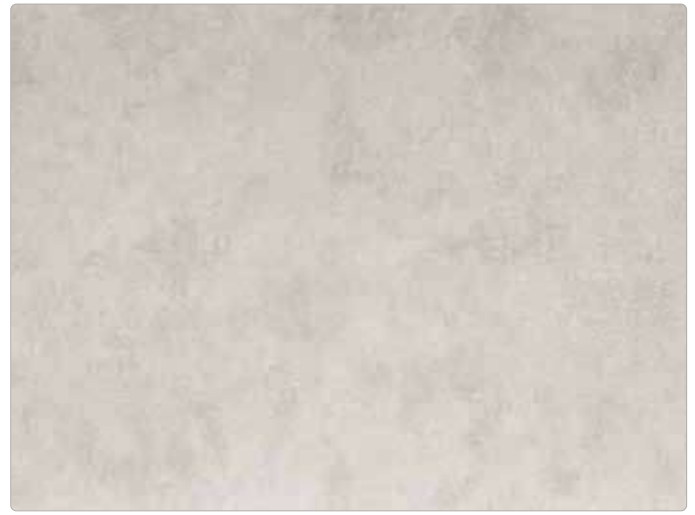
Turin Marble Ultramatt



Underground Stucco Ultramatt



Cassata Ultramatt



Element Roche



Warm Walnut Block Ultramatt



Stableford Oak Block Ultramatt



Pitch Pine Ultramatt



Black Oak Ultramatt



Meymac Oak Ultramatt



Mondego Oak Ultramatt



Gardenia Ultramatt



Clear Beech Block Ultramatt



Brocante Oak Ultramatt



Walnut Appalaches Ultramatt



Nagoshi Pine Fibril



Absolute Fusion



Asphalt Roche



Lima Surf



Nero Granite Surf | Gloss



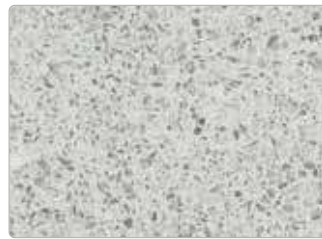
Platinum Granite Surf



Pewter Dust Surf



Galaxy Stone Surf



Lunar Quartzstone Surf



Granite Beige Surf



Maryland Fonce Surf



Dakota Surf



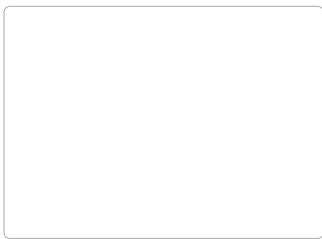
Oatgrain Surf



Saturn Surf



Gris Paloma FA



Pure White Surf



Chirala Stone Surf



Solar Quartzstone Surf



Strass Blanc Higlöss



Strass Noir Higlöss

availability chart

design	texture	complete The professional kitchen joining adhesive Complete coloured adhesive	3000 x 600 x 28mm		3000 x 900 x 38mm		3000 x 600 x 38mm		3000 x 900 x 38mm		4100 x 600 x 38mm		4100 x 665 x 38mm		4100 x 900 x 38mm		3000 x 600 x 8mm		3000 x 600 x 9mm		3000 x 600 x 4mm		3000 x 100 x 20mm	
			worksurface 28mm	breakfast bar	worksurface 38mm	breakfast bar	worksurface 38mm	breakfast bar	worksurface 38mm	breakfast bar	worksurface 38mm	breakfast bar	worksurface 38mm	breakfast bar	splashback	splashback	acrylic splashback	splashback	splashback	upstand	upstand	upstand	upstand	upstand
Absolute	fusion	jet black			•	•	•	•	•	•	•	•												•
Cassata	ultramatt	ivory					•	•	•	•	•	•					•							•
Gardenia	ultramatt	ash grey					•	•	•	•	•	•					•							•
Walnut Appalaches	ultramatt	toffee					•	•	•	•	•	•					•							•
Sirocco Marble	ultramatt	silver grey					•	•	•	•	•	•					•							•
Solace Marble	ultramatt	fudge					•	•	•	•	•	•					•							•
Underground Stucco	ultramatt	mushroom					•	•	•	•	•	•					•							•
Turin Marble	ultramatt	silver grey					•	•	•	•	•	•					•							•
Warm Walnut Block	ultramatt	fudge					•	•	•	•	•	•					•							•
Brocante Oak	ultramatt	mushroom					•	•	•	•	•	•					•							•
Mondego Oak	ultramatt	fudge					•	•	•	•	•	•					•							•
Pitch Pine	ultramatt	fudge					•	•	•	•	•	•					•							•
Black Oak	ultramatt	mushroom					•	•	•	•	•	•					•							•
Stableford Oak	ultramatt	chestnut					•	•	•	•	•	•					•							•
Clear Beech Block	ultramatt	oatmeal	•	•			•	•	•	•	•	•												•
Meymac Oak	ultramatt	oatmeal					•	•	•	•	•	•												•
Nagoshi Pine	fibril	slate grey					•	•	•	•	•	•					•						*	•
Asphalt	roche	basalt grey					•	•	•	•	•	•					•							•
Tectonica	roche	silver grey					•	•	•	•	•	•					•							•
Woodstone Grey	roche	pewter grey					•	•	•	•	•	•					•							•
Woodstone White	roche	ash grey					•	•	•	•	•	•					•							•
Element	roche	ash grey					•	•	•	•	•	•					•							•
Nero Granite	gloss	jet black					•	•	•	•	•	•					•							•
Strass Blanc	higloss	ice white					**	•	•	•	•	•					•						*	•
Strass Noir	higloss	jet black					**	•	•	•	•	•					•						*	•
Nero Granite	surf	jet black	•	•			•	•	•	•	•	•					•							•
Galaxy Stone	surf	slate grey	•	•			•	•	•	•	•	•												•
Lunar Quartzstone	surf	silver grey					•	•	•	•	•	•												•
Solar Quartzstone	surf	fudge					•	•	•	•	•	•												•
Chirala Stone	surf	fudge					•	•	•	•	•	•												•
Platinum Granite	surf	pewter grey					•	•	•	•	•	•												•
Pewter Dust	surf	basalt grey	•	•			•	•	•	•	•	•												•
Oatgrain	surf	ivory					•	•	•	•	•	•												•
Satum	surf	silver grey					•	•	•	•	•	•												•
Pure White	surf	ice white	•	•			•	•	•	•	•	•												•
Granite Beige	surf	ash grey	•	•			•	•	•	•	•	•					•							•
Lima	surf	jet black	•	•			•	•	•	•	•	•												•
Maryland Fonce	surf	basalt grey	•	•			•	•	•	•	•	•					•							•
Dakota	surf	basalt grey	•	•			•	•	•	•	•	•												•
Gris Paloma	FA	silver grey	•	•			•	•																•

All worksurfaces and splashbacks have a 3mm radius profile (Q3) unless otherwise indicated. * 8mm (Q8) ** 10mm (Q10)

Splashbacks								
design	material type	adhesive colour						
Casablanca multi	MDF	fudge						•
Casablanca grey	MDF	basalt grey						•
Vintage taupe	MDF	silver grey						•
Vintage grey	MDF	silver grey						•
Honeycomb	MDF	basalt grey						•
Roulette Curves white	MDF	ice white						•
Roulette Curves taupe	MDF	pewter grey						•
Blocked Hex dove	MDF	silver grey						•
Blocked Hex midnight	MDF	jet black						•
Herringbone natural	MDF	pewter grey						•
Herringbone whitewash	MDF	silver grey						•
London Brick	MDF	toffee or silver grey						•
Summer Palm	MDF	olive green						•
Golden Grove	MDF	slate grey						•
Inner City ice cloud	acrylic	silver grey						•
Inner City ocean grey	acrylic	silver grey						•
Kaleidoscope charcoal grey	acrylic	silver grey						•
Kaleidoscope cool blue	acrylic	silver grey						•
Constellation	acrylic	pewter grey						•
Hazy Forest	acrylic	Basalt grey						•
Stone	gloss							•
Brushed Copper	metal							•
Brushed Aluminium	metal							•

here to help

Choosing a new kitchen is an exciting time and we have all the tools you need.

You want to get your new kitchen right and we want to help.

Head to our Design Studio online to try out your favourite decor combinations in a range of kitchen settings by placing worksurface, splashback and upstand designs.

Then, you can order samples from our website and find a retailer near you.

Visit www.bushboard.co.uk/design-studio



what to do next!

order brochures I order free samples I create with our design studio
find inspiration for your home I find a retailer near you

www.bushboard.co.uk



Sampling

Choose up to six of your favourite designs to sample for free!

Use the sampling service to see how Options laminates look and feel in real life and plan your perfect kitchen combination.

Your retailer can request these for you or you can order them directly to your home by visiting our website.

www.bushboard.co.uk



Our retail partners

Thousands of retail partners proudly stock the Options range and are waiting to help you with your new kitchen plans. Experts there can give you advice on design and installation as you explore the full range of Options samples in store.

Enter your postcode into our Find a Retailer search page to find your nearest locations.

www.bushboard.co.uk/retailers



Customer Support Team

Need to talk?

Our Customer Support Team is here to help.

01933 232 272

**business support@
bushboard.co.uk**



@bushboard



facebook.com/
bushboard



@bushboard



Bushboard2353



BushboardLtd

more great reasons

complete

The professional worktop jointing adhesive

Exclusive 3 year joint guarantee

Use Complete for peace of mind and an exclusive 3 year joint guarantee.

Get the final installation right by asking your installer to use Complete, our bespoke adhesive and sealant.

Complete bonds and seals worksurfaces, upstands and splashbacks and is backed by our exclusive 3 year guarantee on joints, giving you superb performance at a modest price point.

Available in a wide choice of colours designed to complement our Options surfaces, Complete will give you the perfect watertight result.

Full joint guarantee details are available on our website or from the Business Support Team.

The team can offer advice on installing and maintaining your Options surfaces. The Installation, Care & Maintenance leaflet is included in every worksurface and is also available online.

Bushboard offer Complete sealant colours to complement our full range of worksurfaces. The sealant colours in our matrix on page 43 are our suggestions, feel free to use any colour from the selection that you deem more suitable to coordinate with your chosen surface.



Jet Black

Basalt Grey

Slate Grey

Pewter Grey

Silver Grey

Ash Grey

Ice White

Ivory

Vanilla

Oatmeal

Fudge

Mushroom

Chestnut

Chocolate

to buy Bushboard

At Bushboard we're passionate about everything we do and we're always here to help.

We invest heavily in high quality manufacturing and work with the best materials and suppliers. Our values of partnership, loyalty and an ethical approach mean we do what's right; that's why we've been around since the 1930s.

Our commitment to quality management is proven by our ISO 9001 certification and our ISO 14001 is testament to our passion for reducing our environmental impact.

Even after Bushboard products arrive in your home we strive to assure a quality installation. Our Complete adhesive and sealant range is designed to make the installer's life easier and assure a quality long-lasting installation for you.

Quality

Manufacturing with the finest materials is what gives Bushboard worksurfaces their signature quality. While beautiful and stylish to look at, they are also constructed to cope with the wear and tear of everyday living. Independently tested to BS/EN438, your Bushboard worksurface is designed to withstand knocks, abrasions, chemicals, cigarette burns, steam, stains from juice, tea, wine or coffee. It is also highly resistant to heat, although we recommend the use of a protective pad as saucepan bottoms can become extremely hot.

Options worksurfaces are designed to perform below the surface too; a resin impregnated moisture resistant barrier combines with Bushboard's unique 'Tekseal' cast resin drip-edge to completely seal the underside against moisture penetration from everyday spills. However, it is really important that spills are mopped up immediately to reduce unnecessary damage.

Care & Maintenance

Bushboard worksurfaces are so easy to maintain. On a day-to-day basis all you need to do is wipe them down with a moist cloth and your favourite mild detergent. For more stubborn marks such as fruit juice and coffee, leave the detergent to soak on the surface for a little while before rinsing thoroughly. Obviously, your worksurface can become damaged if mistreated, so we recommend some sensible measures like placing hot pans or casserole dishes on protective mats and mopping up spills quickly. As with any laminate worksurface, you should avoid chopping, cutting or placing hot items directly on to the surface.

Textures

Premium textures need a little more care and attention. Please remember they are fashionable finishes and tend to show marks and scratches more easily with everyday use. This is also true of darker, plainer and matt finishes.



Bushboard worksurfaces are guaranteed for their lifetime. Bushboard will make good by repair and/or replacement (at its discretion) any Options product of its manufacture which can be shown to have failed by reason of defects in its manufacture, subject to fair wear and tear, provided the product has been installed and used in accordance with the manufacturer's instructions and that the products are used for their intended purpose. Proof of date and place of purchase required. This guarantee is in addition to your statutory rights as a consumer and does not affect your rights in any way.

www.bushboard.co.uk

tel: 01933 232 272
email: businesssupport@bushboard.co.uk



@bushboard
www.facebook.com/bushboard
@bushboard
Bushboard2352
BushboardLtd

Bushboard Ltd
9-29 Rixon Road
Wellingborough
NN8 4BA

The company reserves the right to change specifications at any time, without notice. Every effort has been made to achieve faithful representations of our products in this brochure, but due to printing limitations we recommend that samples of actual material are requested before purchasing.

www.bushboard.co.uk

01933 232272

follow us on our social media channels...

